

PRECAST STAIRCASE SYSTEM

“There is security for an engineer to know that the principal reinforcement in the structural elements has been fixed in the right place in the factory, rather than be subject to the hazards of a building site where incorrect steel fixing, poor cover control, poor placing of concrete, etc. are every day occurrences.”

— Pr.Eng. Ugo Rivera




TeSik
D E C K I N G

About:

Founded in 1994 in the Western Cape, Cobute (Concrete Building Technology) brings extensive experience in the manufacturing of precast elements for the building industry in Italy. Cobute started with the production of an innovative **precast reinforced concrete decking system**, the lightest precast system available on the market, which does not require the use of a crane to be installed.

New products were developed with the assistance of a Civil Engineer in 1996, to offer the easiest method of installation on site; a patent was registered, under the name Shuttercrete, for **permanent precast concrete shutters for columns, beams and staircases**.

Currently, Cobute produces and offers over 30 different products that serve markets not only in the Western Cape but throughout South Africa and the SADC community. In 2016, TeSik Decking started manufacturing the Cobute system in Swakopmund, bringing this innovative technology to Namibia.

This is a unique patented precast system that combines the elements of the Cobute beam and decking system, designed to replace conventional timber shuttering and to reduce steel fixing (minimal shuttering may however be required).

The basic components are **precast girders** (left and right elements), completed with **precast ribs, interlocking panels and risers**. The result is a precast concrete shutter, which forms the shell of a staircase, with reinforcement cast in, as specified by the Engineer.

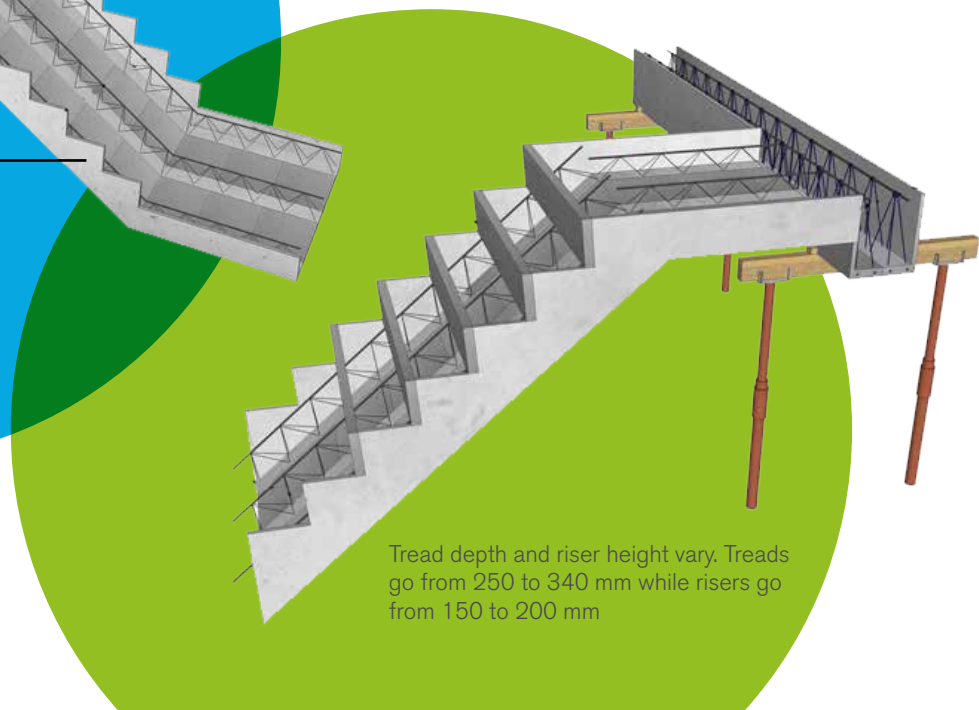
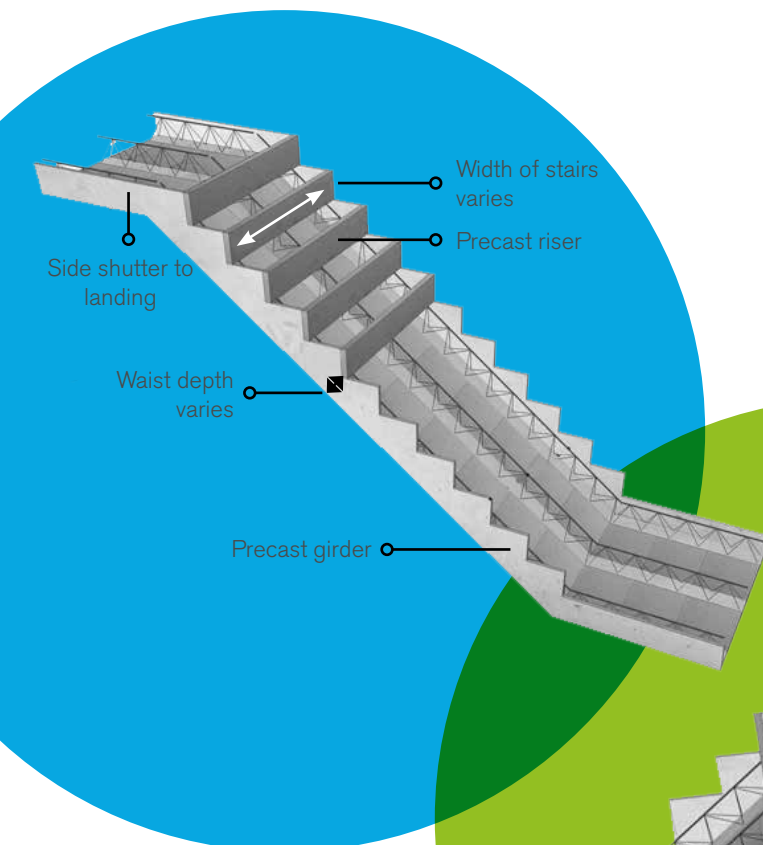
The stair components are reasonably light, easy to manoeuvre and quick to install; a straight flight of stairs can be installed, ready for casting, in roughly 2 hours by 4 workers. Generally, the staircase must stay propped for 14 days after casting (unless otherwise specified by the Engineer).

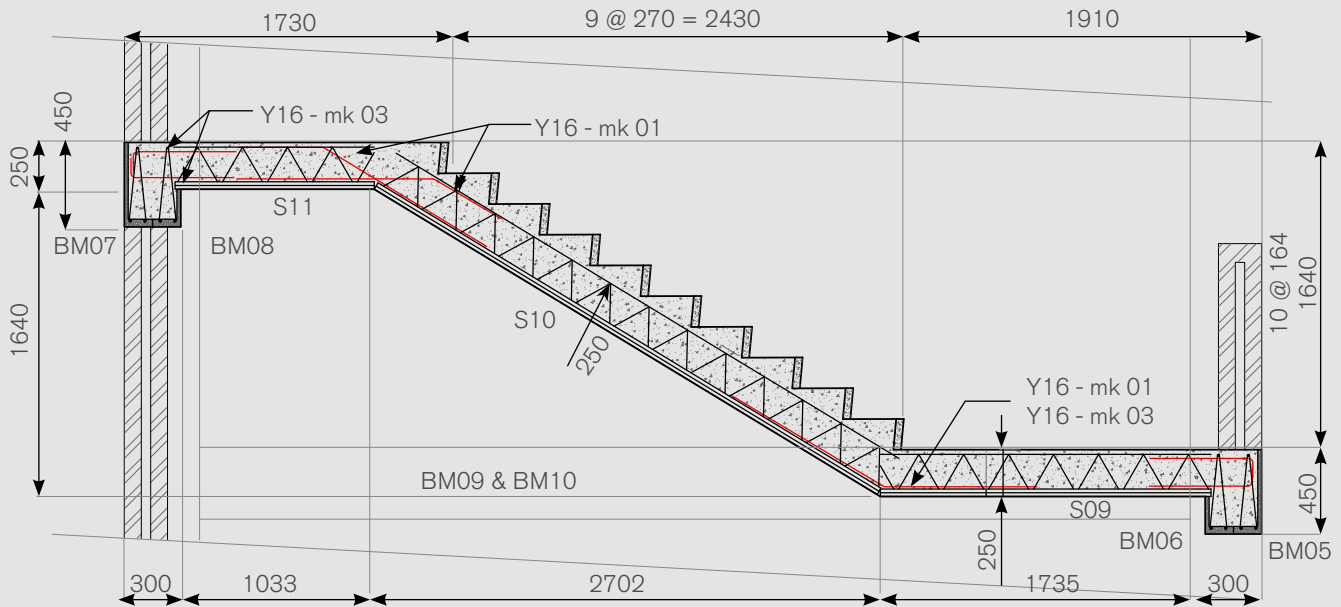
The Cobute concrete stair, decking and beam systems are complementary and incorporated into one concrete cast, therefore **reducing time and concrete costs**.

The Cobute staircase has no standard dimensions; each unit is custom made to suit the individual project specifications.

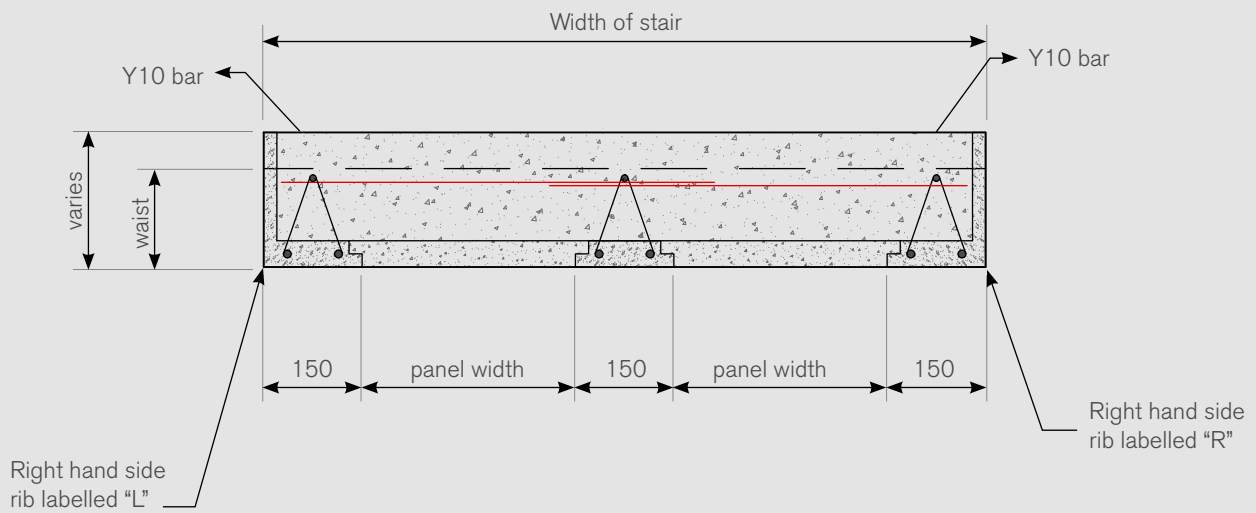
Why Cobute staircase system?

- Unique patented system
- More cost effective than conventional cast in-situ
- Easy-to-manoeuvre and quick to install
- Minimal propping and quick stripping
- No measurement constraints
- Complemented by Cobute beams and deck, to cast the whole project in one pour





This is a typical cross section through a Cobute staircase, showing the lower and upper landing, being supported by Cobute beams.



This is a typical section through the stairs, showing edge ribs along the two sides and stair soffit in the centre.



This sketch shows the integration of the Cobute precast stair with the in-situ parapet.

Cobute

CONCRETE BUILDING TECH



TeSik Decking contact details:

☎ 081 673 8029

@ info@tesikgroup.com

🌐 www.tesikgroup.com

📍 Erf 3959, Einstein Street, Swakopmund

✉ PO Box 7384, Swakopmund, Namibia

Cobute contact details:

☎ 021 556 8488

☎ 021 556 3064

@ office@cobute.co.za

🌐 www.cobute.co.za

📍 Potsdam Road, Potsdam, Cape Town

✉ P.O.Box 60964, Flamingo Square, Table View, Cape Town 7439